

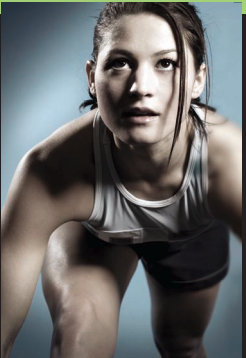


# WORLD GYM

Fitness and SportsComplex

The Premier Norwich Area Community Club Continues To Get Even Better!

## SERVICES & AMENITIES



- 40,000 sq. ft. of fitness with tons of state of the art equipment
- Open over 100 hours per week - no restrictions on the time that you can use the club
- Supportive staff with your own personal Fitness Consultant Cheerleader
- Personal training programs with PULSE certified personal trainers
- Fitness consultation with certified trainers included in memberships
- Indoor Tennis / Tennis teaching professionals
- Yoga / Pilates, Step, Strength and Conditioning and Zumba group exercise classes (to name a few). Approximately 25 Group Exercise classes per week
- Spinning / Cycling classes
- Basketball, Volleyball, Soccer
- Tanning (as low as \$15 per month for unlimited w/ membership)
- Member charging privileges
- Juice Bar / Drinks and Bars / Pro Shop / Senior Programs
- Family owned and operated - No big, impersonal corporations
- Guest Sundays - 1st and 3rd of each month
- 7,000 sq. ft. of multi-purpose space for sports of all kinds
- Travel pass program - Access to over 1,800 World Gyms and IHRSA Clubs world-wide and much, much more...



### NOW! New Services On Site For Your Convenience:

- Baillargeon Athletics LLC - 6 Week Fitness Boot Camps 303-4959  
baillargeonathletics.com
- Thames Valley Academy of Gymnastics - 886-4006, thamesvalleygymnastics.com
- PULSE Personal Training Centre - 887-3591, worldgymnorwich.com
- Inner Balance & New Beginnings Massage Therapy 373-9193
- Supplement City - 892-1804



NORWICH  
BUSINESS PARK  
(860)887-3591

WWW.WORLDGYMNORWICH.COM



**PLEASE OPEN**  
for the Best  
Membership Offer for  
your Employees and  
their Families Ever!

**At a Low Cost  
Corporate Rate**

**ACTIVATE NOW**  
to motivate  
your employees,  
cut down on  
healthcare costs  
and show you care!



**WORLD GYM**  
Fitness and SportsComplex

2 Wisconsin Ave. • Norwich Business Park 06360  
(860)887-3591 • [www.info@worldgymnorwich.com](http://www.info@worldgymnorwich.com)

Employers / Managers / C.E.O's / Bosses / Community Leaders / Organizations

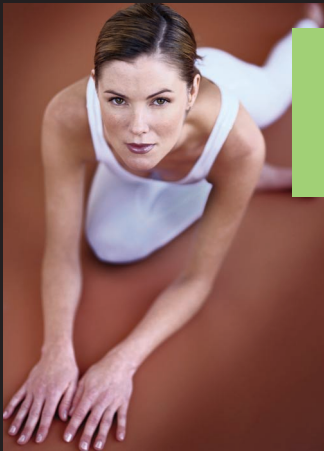
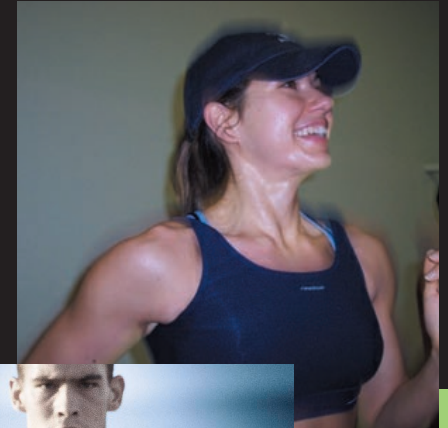


**WORLD GYM**

2 Wisconsin Ave.  
Norwich Business Park

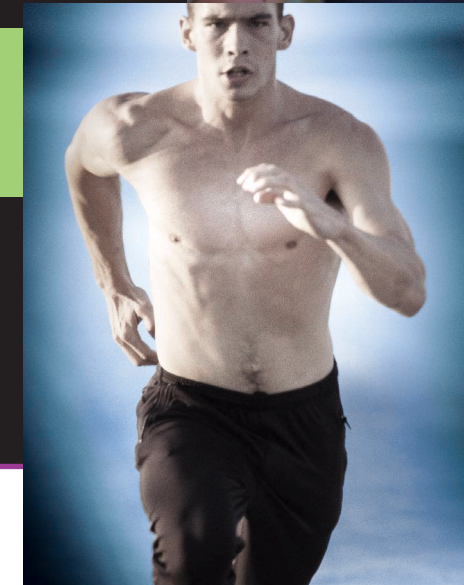
offers you a very special price for our Premier Fitness Membership which you can use yourself and/or pass on to your employees, their spouses and their kids/teens \*

- This is one of the most desired employee perks you can offer your great employees!
- It doesn't have to cost you one red cent (unless you wish to subsidize it based on usage)
- It can cut down on your healthcare costs, lessen injuries and sick time, and motivate and rejuvenate your staff!



**ONLY \$19.00**  
per month per person

for our *Premier* membership  
No enrollment fee charged  
and on a month to month basis



**ALL YOU HAVE TO DO IS:**

- Provide payroll deduction for these memberships
- Allow us approximately 1/2 hour with your payroll or human resource director to set up the program
- Initially enroll a group of 8 or more people
- Allow us to motivate your employees with a quarterly, inspirational newsletter about fitness and health initiatives provided via payroll inserts or e-mail

**PLUS** – Any group who initially joins with 20 or more people is invited to use our facility at no cost for a Saturday or Sunday evening fun fitness party.

**REMEMBER** – This special pricing is not only offered to your employees but to their whole family!

For more information or to get started call now or e-mail us directly at – (860) 887-3591 / [info@worldgymnorwich.com](mailto:info@worldgymnorwich.com)

\* Kids / Teens are defined as 4'8" inches tall which is the height needed for safe use of our equipment through young people age 23, living at home.

Call Jolene Bowers - Corporate Director

**(860)887-3591**

[info@worldgymnorwich.com](mailto:info@worldgymnorwich.com)